



SM Eng. Co., Ltd.

(주) 에스엠이엔지

1121-2 GUPO-DONG BUK-GU BUSAN KOREA TEL : 81-51-305-8016 FAX : 81-51-305-8018
E-mail : sales@sm-eng.net www.sm-eng.net

A bright sunburst graphic with multiple rays emanating from a central point, positioned behind the 'Rex Point' logo.

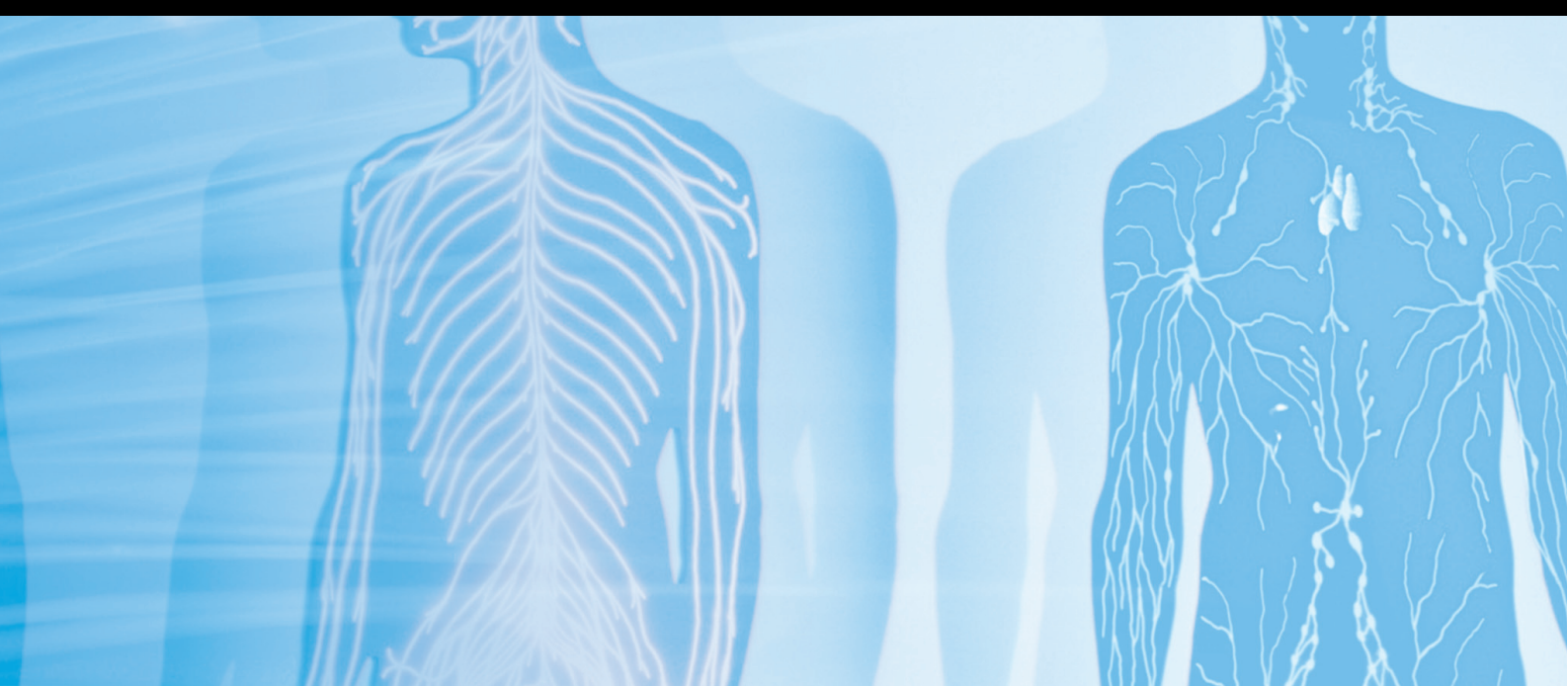
Rex Point®

STAINLESS STEEL
SUTURE NEEDLES



SM Eng. Co., Ltd.
(주) 에스엠이엔지





C O N T E N T S

04 | TYPE OF NEEDLE

05 | TYPE OF CIRCLE · TYPE OF EYE

06 | 외과용 각침 3/8 CIRCLE(GENERAL CLOSURE) · 외과용 각침 1/2 CIRCLE(GENERAL CLOSURE)

07 | 외과용 각침 STRAIGHT(GENERAL CLOSURE) · 내복용 환침 1/2 CIRCLE(ABDOMINAL)

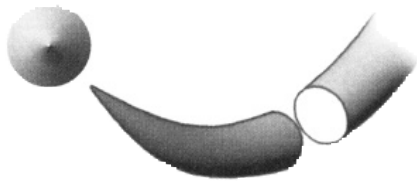
08 | 내장용 환침 1/2 CIRCLE(INTESTINAL) · 내장용 환침 STRAIGHT(INTESTINAL)

09 | 부인과용 환침 1/2 CIRCLE(OB-GYN) · 부인과용 각침 1/2 CIRCLE(OB-GYN)

10 | 안과용 각침 3/8 CIRCLE(OPHTHALMIC) · 혈관용 환침 1/2 CIRCLE(VASCULAR)

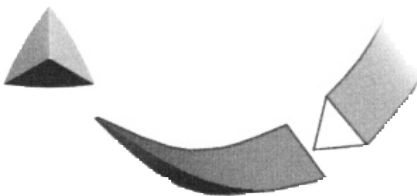
11 | 피부용 각침 3/8 CIRCLE(SKIN) · 각막용 각침 3/8 CIRCLE(CORNEAL)

TYPE OF NEEDLE



TAPER POINT NEEDLE

THIS TYPE OF NEEDLE PENETRATES, PASSES THROUGH TISSUES BY STRECHING WITHOUT TISSUE CUTTING, NORMALLY THIS NEEDLE MINIMIZES POTENTIAL TEARING OF FASCIA AND IS USED FOR EASILY PENETRATED TISSUES AS LIKE ABDOMINAL VISCERA, PERITONEUM, DURA, SUBCUTANEOUS LAYERS.



CONVENTIONAL CUTTING NEEDLE

THIS TYPE OF NEEDLE HAS 3 CUTTING EDGES AND DESIGNED FOR TISSUE THAT IS TOUGH TO PENETRATE AS LIKE SKIN, TENDON SHEATHS, ORAL MUCOSA.



REVERSE CUTTING NEEDLE

SAME WITH ABOVE CONVENTIONAL TYPE AND THESE NEEDLES ARE ALSO HELPFUL IN COSMETIC AND OPHTHALMIC SURGERY, CAUSING IT'S MINIMAL TRAUMA.

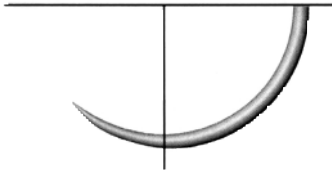


SPATULA CUTTING NEEDLE

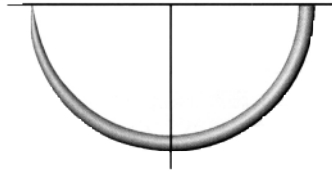
THIS TYPE OF NEEDLE DESIGNED TO REDUCED TISSUE INJURY AND ALLOW MAXIMUM EASE OF PENETRATION AND CONTROL AS IT PASS BETWEEN AND THROUGH TISSUE LAYERS.

TYPE OF CIRCLE

135° (3/8)



180° (1/2)

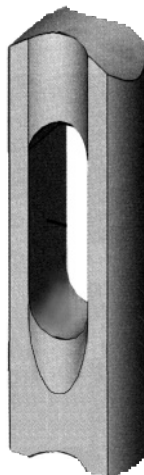


STRAIGHT

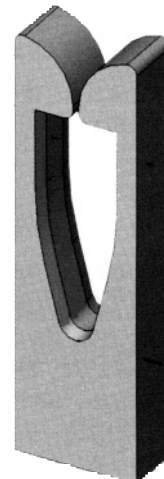


TYPE OF EYE

REGULAR EYE



SPRING EYE

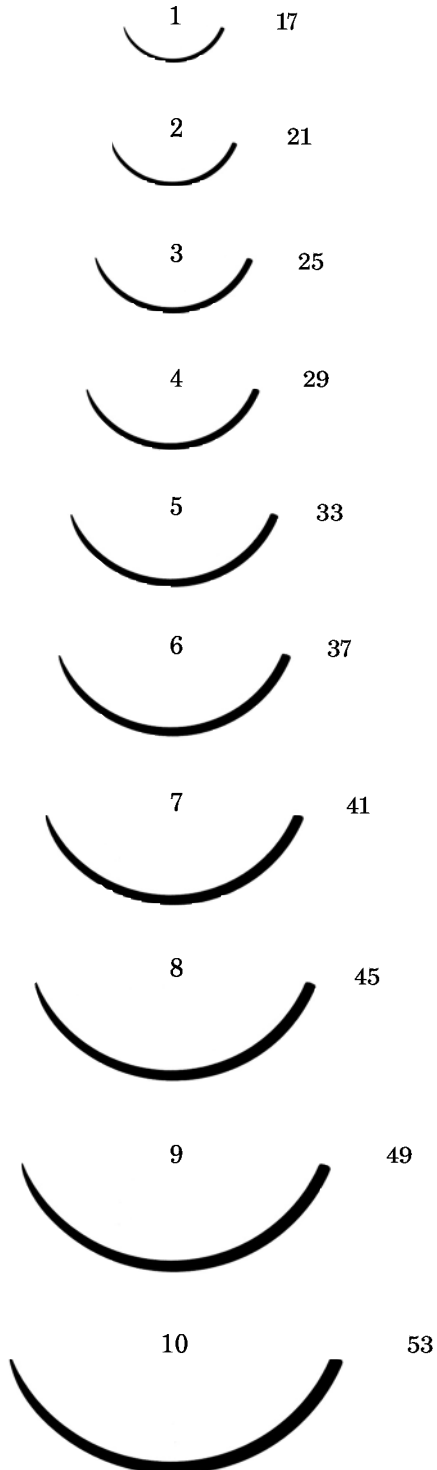




외과용 각침 3/8 CIRCLE
(GENERAL CLOSURE)

P102 : REGULAR EYE

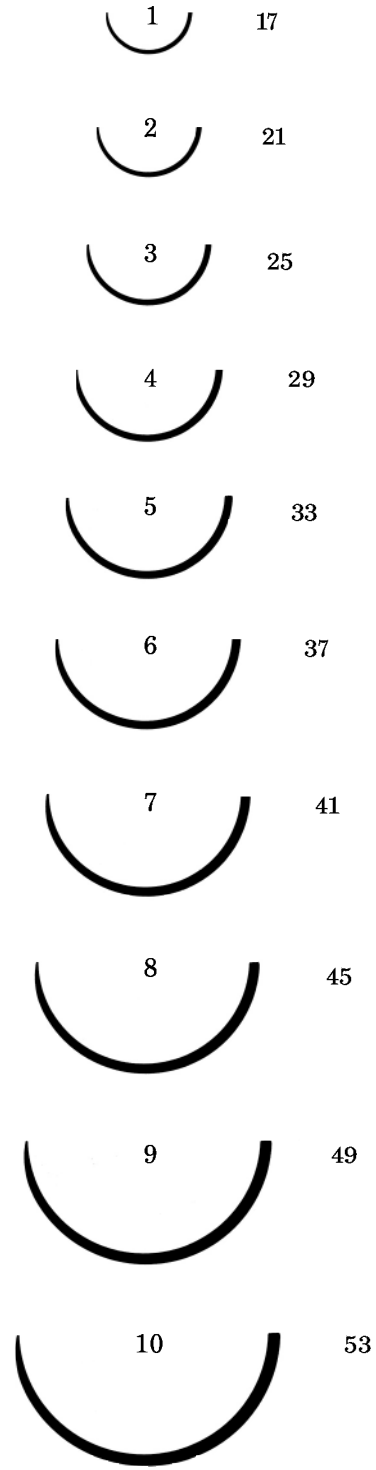
101 : SPRING EYE



외과용 각침 1/2 CIRCLE
(GENERAL CLOSURE)

P106 : REGULAR EYE

105 : SPRING EYE





외과용 각침 STRAIGHT
(GENERAL CLOSURE)

P162 : REGULAR EYE

161 : SPRING EYE

	1	30
	2	35
	3	40
	4	45
	5	50
	6	55
	7	60
	8	65
	9	70
	10	85



내복용 환침 1/2 CIRCLE
(ABDOMINAL)

P114 : REGULAR EYE

105R : SPRING EYE

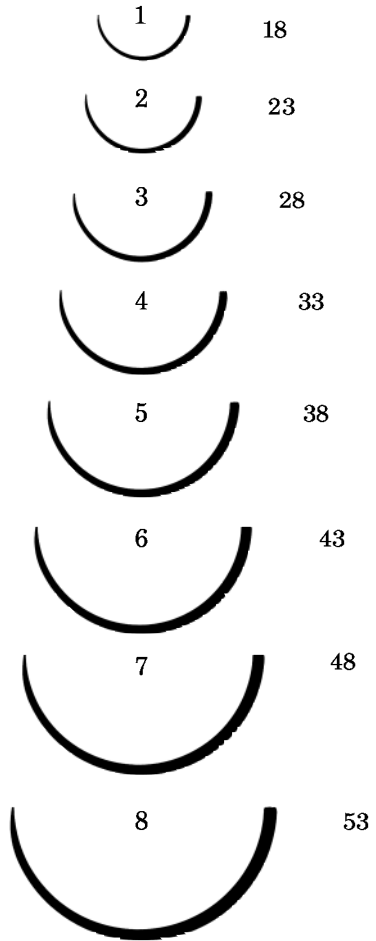
	1	17
	2	21
	3	25
	4	29
	5	33
	6	37
	7	41
	8	45
	9	49
	10	53



내장용 환침 1/2 CIRCLE
(INTESTINAL)

P136 : REGULAR EYE

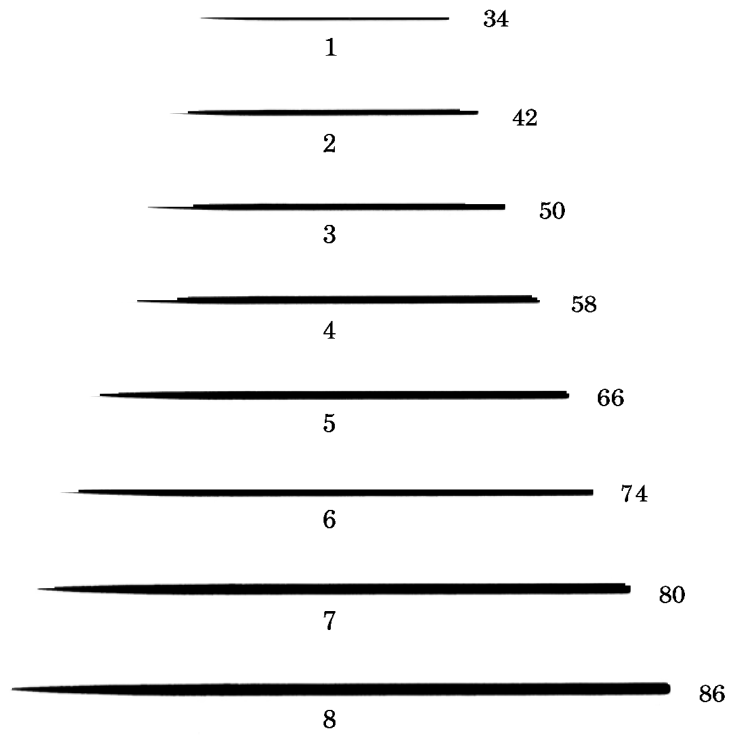
135 : SPRING EYE



내장용 환침 STRAIGHT
(INTESTINAL)

P134 : REGULAR EYE

133S : SPRING EYE

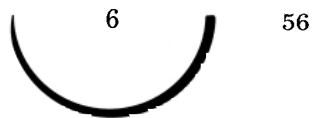




부인과용 환침 1/2 CIRCLE
(OB-GYN)

P144 : REGULAR EYE

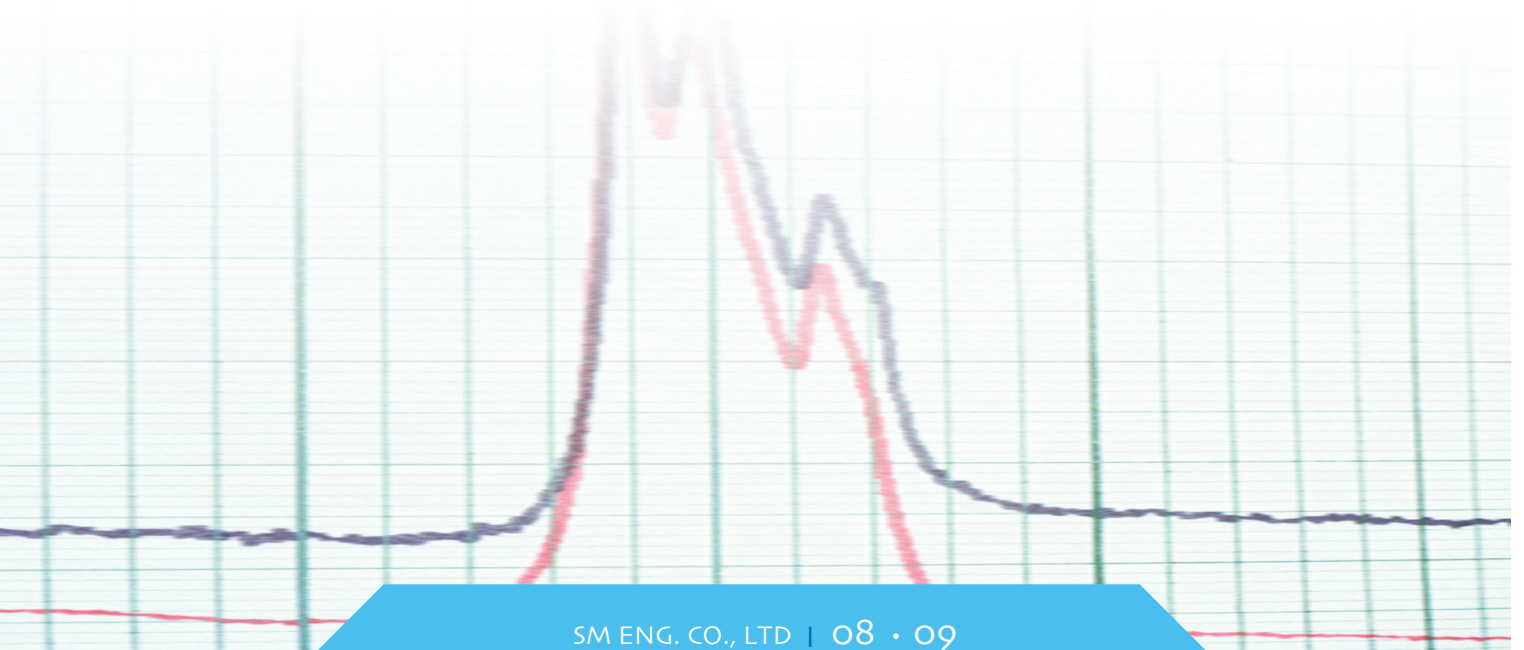
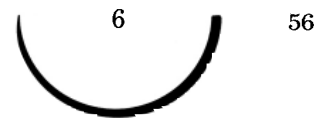
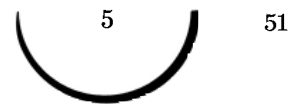
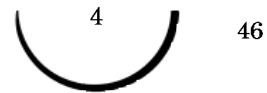
143 : SPRING EYE



부인과용 각침 1/2 CIRCLE
(OB-GYN)

P142 : REGULAR EYE

141 : SPRING EYE

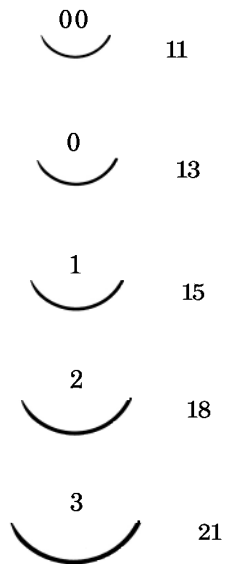




안과용 각침 3/8 CIRCLE
(OPHTHALMIC)

P124 : REGULAR EYE

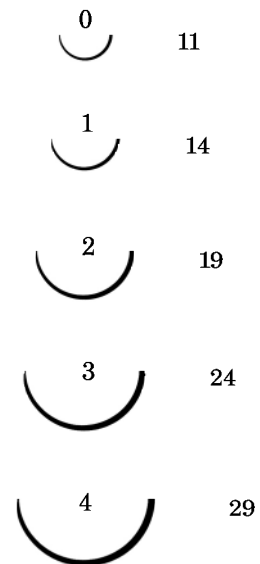
123 : SPRING EYE



혈관용 환침 1/2 CIRCLE
(VASCULAR)

P24 : REGULAR EYE

22 : SPRING EYE

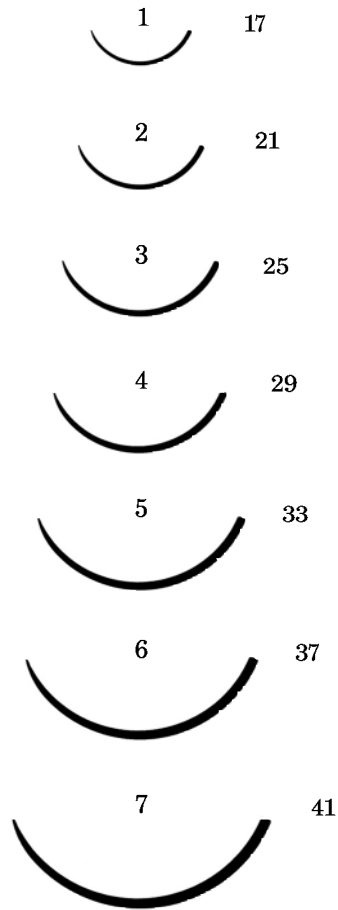




피부용 각침 3/8 CIRCLE
(SKIN)

P104 : REGULAR EYE

101R : SPRING EYE



각막용 각침 3/8 CIRCLE
(CORNEAL)

P128 : REGULAR EYE

127 : SPRING EYE

